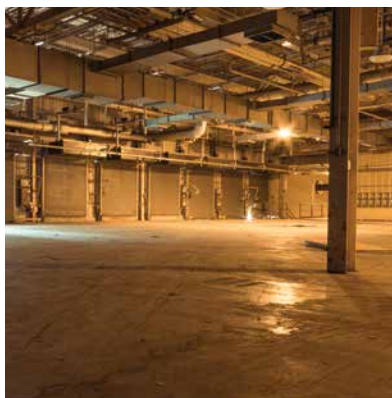


601-1 MANUFACTURING BUILDING



A well landscaped facility that's ideal for advanced manufacturing and storage — with 40 offices, conference rooms, cafeteria, break area and gym.

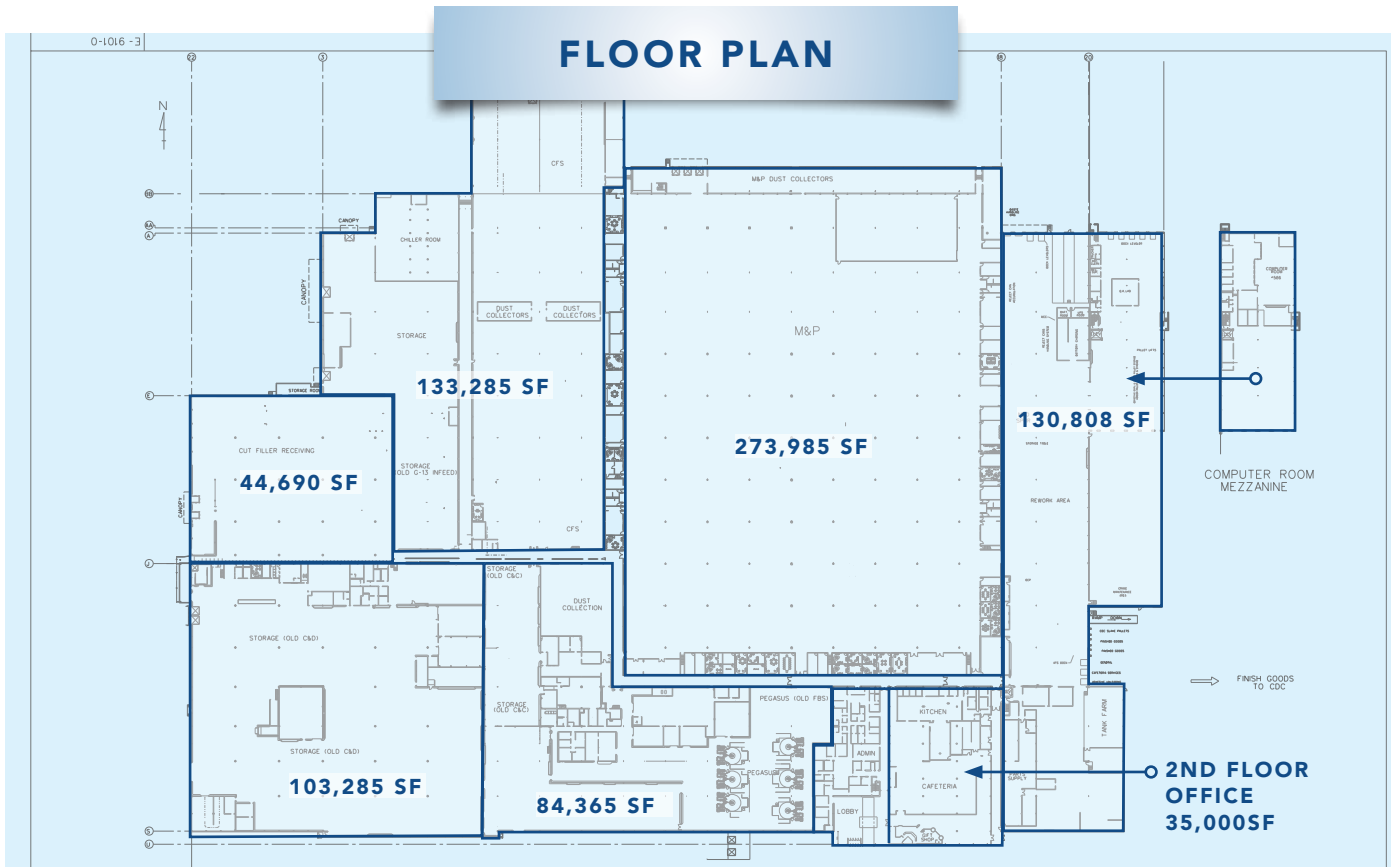


601-1 FEATURES

851,250 S.F. AVAILABLE

- 851,250 S.F. of manufacturing space available
- Approximately 24' 9" floor to roof height
- 1-story facility built in 1961 with approximately 40 offices, three conference rooms, a cafeteria, gym and break area.
- Approximately 1,100 parking spaces

WHITAKER PARK 601-1 MANUFACTURING



LOCATION

