

630-2 LABORATORY BUILDING



A well landscaped facility that's ideal for advanced laboratory and production located on a 3.31 acre site with 75 parking spaces.

630-2 FEATURES

50,000 S.F. AVAILABLE

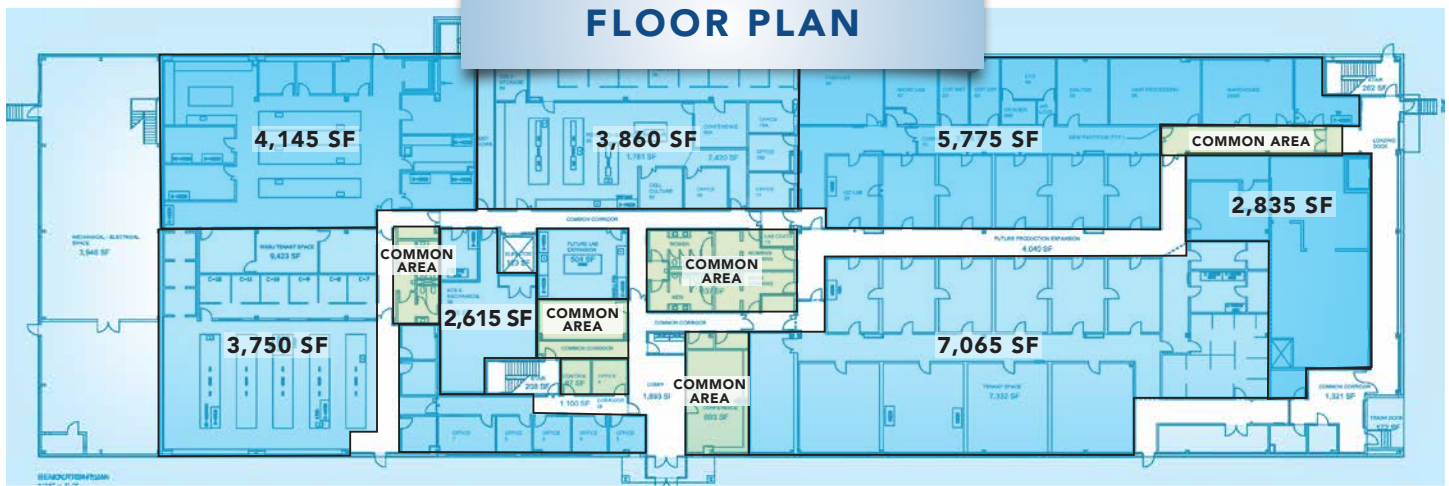
- Approximately 50,000 S.F. of wet lab and production space
- Standalone 3.31 acre site
- 2-story facility with hydraulic elevator built in 1987 constructed of insulated metal panels, structural steel columns, I-beams, metal decking, concrete metal slabs and sprinkled with fire detection
- Complete laboratory structure in place with high pressure compressed air, distilled and potable water, vacuum lines, nitrogen, 5-10% argon, helium, natural gas, oxygen and more.
- On-site Duke Power utility transformer (2000 KVA, 13200-480Y/277V)
- Approximately 75 parking spaces



WHITAKER PARK 630-2 LABORATORY BUILDING



FLOOR PLAN



LOCATION

